

Description of the Valve

High- and Low-pilot valves (pressure switches) are 2/2 or 3/2 valves that switch once a min./max. setpoint is reached. The set-point is adjustable within a pressure range. Both types of valves are used in safety control units (HIPP-Systems or slam shut valves). The valve can be panel-mount.

Technical Data of the Valve

Control pressure X:	up to 700 bar (10.000psi)
Mainstage pressure:	up to 12 bar (175 psi)
Setpoint-range:	0-30 bar 30-60 bar 60-290 bar
Size:	DN1
Deadband:	+/- 5%
Repeatability around setpoint:	+/- 1%
Temperature range:	-25°C to +60°C -13°F to 140°F

Media

Natural gas (sweet and sour), air.
Hydraulic oil (please indicate type or make).

Material

The valve is made of anodized aluminum. All wetted parts inside the valve are made of non-corrosive materials (stainless steel, ceramic balls). As an option, a stainless steel version can be offered to handle sour gas.

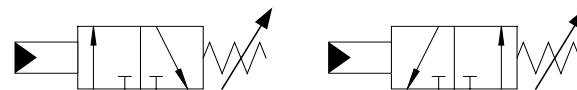
Options

- The valve may be a normally open (NO) or a normally closed (NC) 2/2 or a 3/2 valve which allows to realise all functions required in pneumatic safety-control-units.
- The setpoint range has to be specified.
- A stainless steel version is available to handle sour gas. Further options (material, media etc.) upon request.
- Port size and type.

Designation

207001 007 (aluminum, 0..30 and 30..60 bar)
207001 010 (stainless steel, 0..30 and 30..60 bar)
207001 011 (stainless steel, 60..290 bar)

Symbol



High-/ and Lowpilot 3/2



High-/ and Low-pilot 2/2

Function

The port X has to be connected to the flow line. Ports P, A and T have to be connected to the corresponding lines.

Low-pilot: If the pressure inside this X-port is lower than the setpoint, the valve switches from open to closed or from closed to open.

High-pilot: If the pressure inside this X-port is higher than the setpoint, the valve switches from open to closed or from closed to open.

The set point can be adjusted using the control screw (8). Make sure to lock this set point with the locking nut (9).

The valve can be panel-mount using the nut (10).

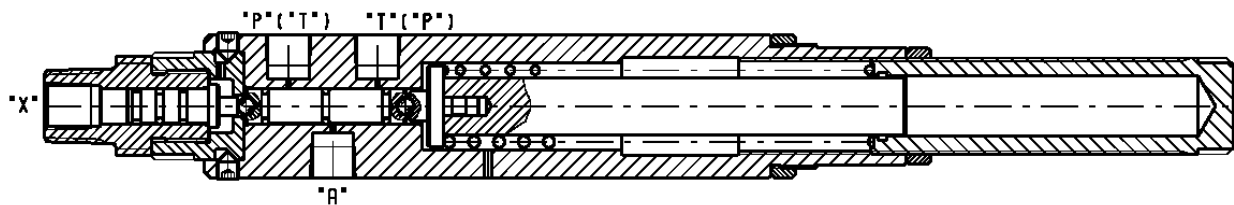
Ports

P, A and T ports are 1/4" NPT, other port sizes are available, please contact factory
X-port 1/4" NPT female or 1/2" NPT male

Note

It is advisable to flush systems acc. NAS – Class 6. Under normal circumstances the valve is service free.

Design



Photographic view

